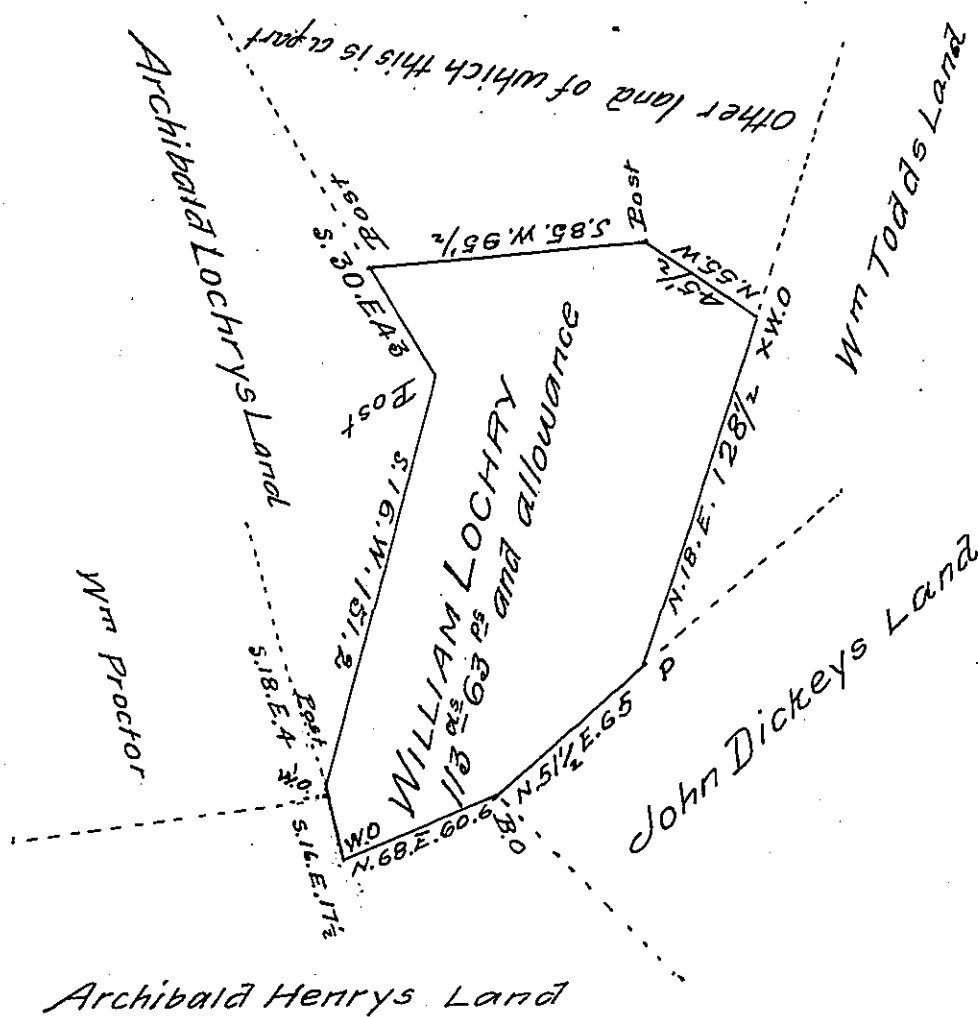


FORM NO. 1.



The above described piece of land containing One hundred and thirteen acres and Sixty three perches and the allowance of Six p Gent. Situate in Unity Township in the County of Westmoreland. is part of a tract surveyed to William Lochry on his order No 1165 dated April 3^d 1769

Survey'd Nov^r 5th 1808

J^d John Moore D.S.

Samuel Cochran Esquire
Surv^r Gen^l of Penn^a

IN TESTIMONY that the above is a copy of the original remaining on file in the Department of Internal Affairs of Pennsylvania, made conformably to an Act of Assembly approved the 16th day of February 1833, I have hereunto set my hand and caused the Seal of said Department to be affixed at Harrisburg, this sixteenth day of August 1907

Henry Howard
Secretary of Internal Affairs.